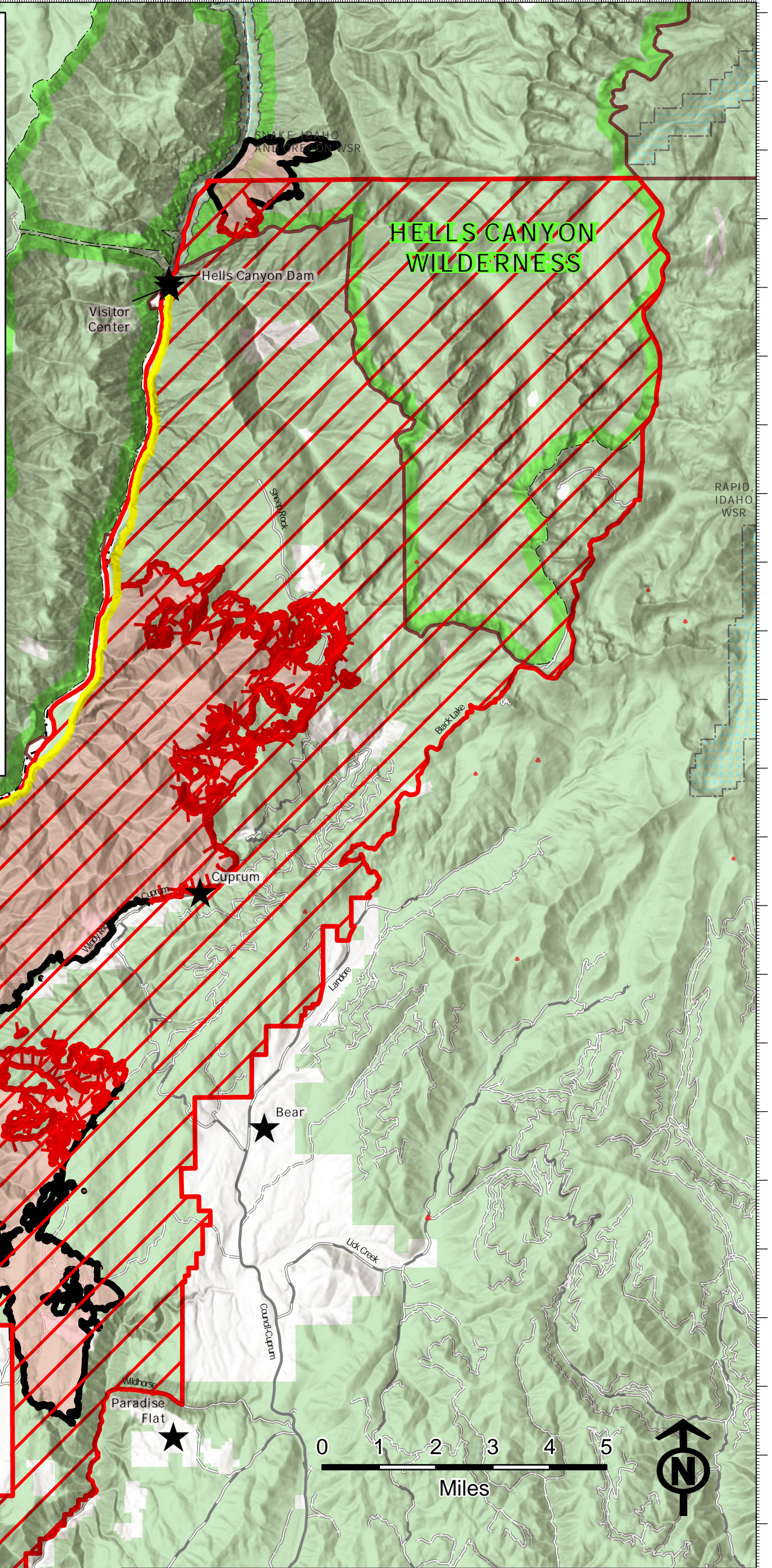
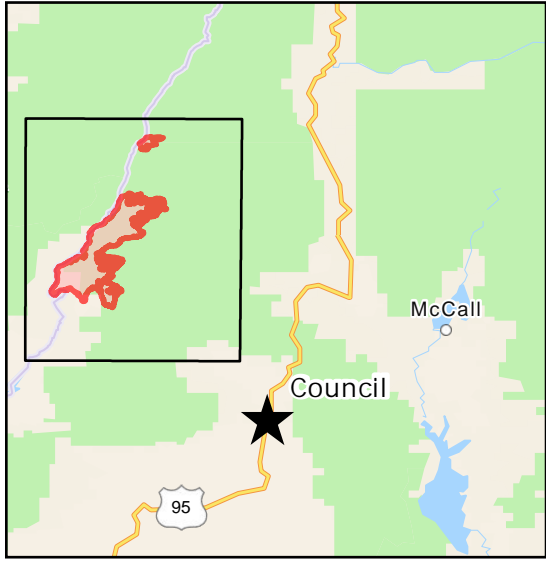


Limepoint & Cliff Mtn. 8/18/2024

31,937 acres
51% Contained



Hell's Canyon Road (NF454)	**OPEN TO PUBLIC**	Wild and Scenic River
Area Closure Order 0412-603		USFS Wilderness
Contained		Bureau of Land Management (BLM)
Uncontained		Other Federal
Wildfire Daily Fire Perimeter		State
Administrative FS Boundary		US Forest Service (USFS)
		Private

116° 53.7'W 116° 51.6'W 116° 49.5'W 116° 47.4'W 116° 45.3'W 116° 43.2'W 116° 41.1'W 116° 39'W 116° 36.9'W 116° 34.8'W 116° 32.7'W 116° 30.6'W

44° 51.3'N 44° 52.35'N 44° 53.4'N 44° 54.45'N 44° 55.5'N 44° 56.55'N 44° 57.6'N 44° 58.65'N 44° 59.7'N 44° 0.75'N 44° 1.8'N 44° 2.85'N 44° 3.9'N 44° 4.95'N 44° 6'N 44° 7.05'N 44° 8.1'N 44° 9.15'N 44° 10.2'N 44° 11.25'N 44° 12.3'N 44° 13.35'N 44° 14.4'N 44° 15.45'N 44° 16.5'N 44° 17.55'N 44° 18.6'N